

The Complexity of the Ordinary Investigation and Interpretation

Silvia Braun *uns* Architektin
Andreas Holzapfel *uns* Architekt

It is possible to find qualities to refer to in every building and in every situation by looking at it with an open mind. We try to find strategies for every single architectural design without being preoccupied about the context. Many considerations are concrete and unreproducible.

The mindful architect relates himself to the context by his investigation, his interpretation, his selection, his associations and his ability to create analogies.

What is there? What and how can it be used? How can it be developed?

Canopy for an Administrative Building in Munich

The canopy is inserted into a joint between precast concrete parts. It takes over the form of the joint and the grey colour of the surroundings. It's made of glass-bead blasted stainless steel with a velvety surface. The construction is hidden. Only at second sight it is possible to recognize the material and the canopy as a new part.



Nursing Home in Munich

An offset of the building volumes recreates a raised sidewalk. This sidewalk with ten shops and an alley become part of the existing and familiar public road and path network again and determine the configuration of the building. They are coated with the traditional Munich pavement.



Ordinariness and Adequacy

Ordinariness requires a social consensus. But it implies no conclusion about quality. Furthermore, the perception of what's ordinary changes over the time, between different cultures or social groups. In architecture it already has become fashion to build images of ordinariness.

Architecture is not life. Architecture is background. Anything else is not architecture. (Herrmann Czech)

„Ordinariness“ not as an image but as content should be used with the meaning of adequacy. The adequacy of resources is an essential approach to every design. It includes that you treat the context with respect.

Perception and Complexity

The subtle alienation of the ordinary challenges the ability of perception of the viewers and users. New relations and relations which were not visible before, become perceptible.

By interweaving the design with the context architecture generates complexity. To create complexity can't be a strategy or an end in itself. Otherwise it becomes intricacy.

Working on a design is dealing with systems in which the structural, social, economical etc. needs are integrated. It is a series of decisions, given ones or own decisions. Later decisions are determined by earlier ones and can be accepted or condemned. The result can look quite simple if all systems are in congruence.

There are no simple solutions for very difficult circumstances. You have to unravel the thread patiently so it won't be torn.

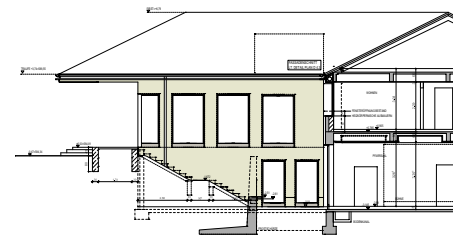
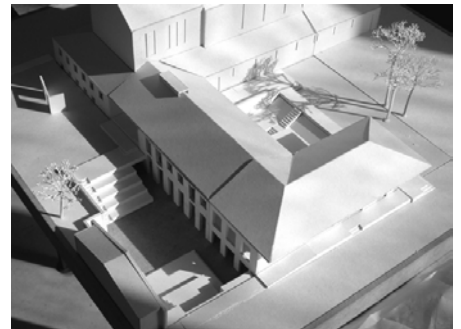
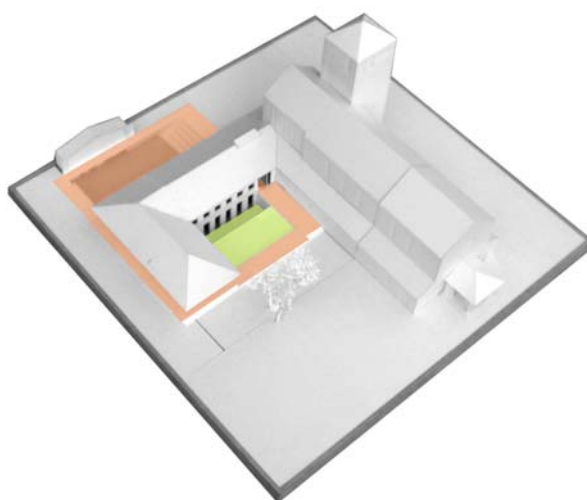
Reconstruction and Extension of a Parish Centre in Pullach

By excavating the terrain on the east, the existing parish hall in the basement gets light and the possibility to open to the exterior. A small hellenic amphitheatre is inserted using the new topography.

The new garden hall offers an adequate entrance for big events like a porticus. In every day parish life it can be used for smaller events and meetings. The cantilevering hipped roof creates a covered space outside. Its form corresponds with the portico of the church.

The extension takes over the most important characteristics of the existing buildings: the hipped tile roof, solid walls and white plaster surfaces.

A loop way, which is elevated 50 cm above the surrounding area, connects the different parts of the complex and allows their independence and autonomy.



The multiple forces behind something give it a plurality of meanings. "The value of something is the hierarchy of forces which are expressed in it as a complex phenomenon." (Nietzsche, in Gilles Deleuze Nietzsche and Philosophy)